

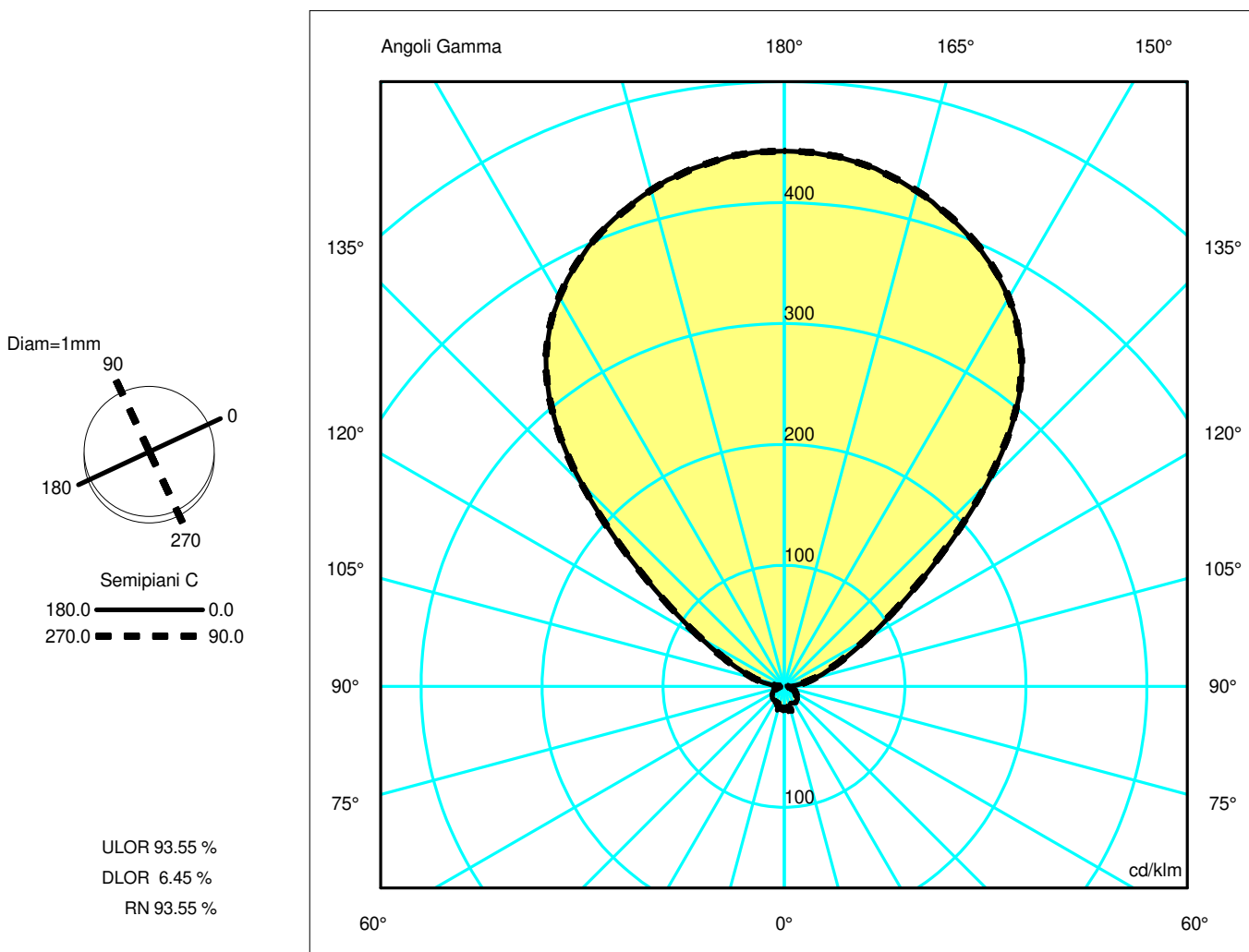
Luminaire

Code 0341010A
Name SPECTRAL LIGHT LED S

Measur.

Code FTS1702510
Name SPECTRAL LIGHT LED S

Luminaire Flux	3360.40 lm	Luminaire Power	60.00 W	Efficacy	56.01 lm/W	Efficiency	100.00%
Lamps Flux	3360.40 lm	Maximum value	442.63 cd/klm	Position	C=25.00 G=179.00	CG	Asymmetrical
Round Luminaire Round Luminous Area		Diam. Diam.	1 mm 1 mm	Height Height	1 mm 0 mm		
Horizontal Luminous Area Emitting area on Plane 0° Emitting area on Plane 90°		0.000001 m2 0.000000 m2 0.000000 m2		Emitting area on Plane 180° Emitting area on Plane 270° Glare area at 76°		0.000000 m2 0.000000 m2 0.000000 m2	
Coordinate system Date Measurement Distance		CG 11-12-2017 0.00		Symmetry Type Maximum Gamma Angle Measurement Flux		Asymmetrical 180 3360.40 lm	
LED Flux=4364,72lm LED Power=56W Eff=77% EfcLed=78lm/W EfcLum=56lm/W L70(6K)=50000h							
C.I.E. F UTE	38 69 90 6 100 0.06 G + 0.94 T			D DIN 5040 B NBN	-- BZ 6 / 2.5 / BZ 5		



Luminaire

Code 0341010A
Name SPECTRAL LIGHT LED S

Measurerm.

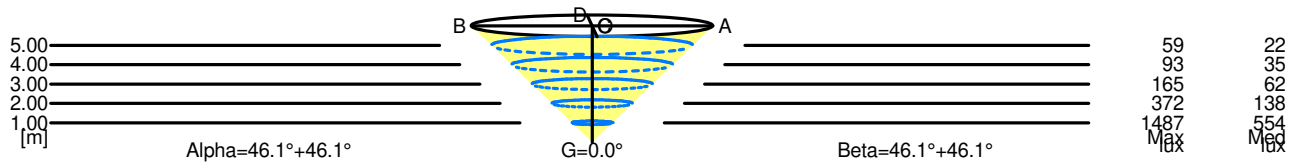
Code FTS1702510
Name SPECTRAL LIGHT LED S

Luminaire Flux	3360.40 lm	Luminaire Power	60.00 W	Efficacy	56.01 lm/W	Efficiency	100.00%
Lamps Flux	3360.40 lm	Maximum value	442.63 cd/klm	Position	C=25.00 G=179.00	CG	Asymmetrical
Round Luminaire Round Luminous Area		Diam.	1 mm	Height	1 mm		
		Diam.	1 mm	Height	0 mm		
Horizontal Luminous Area	0.000001 m2			Emitting area on Plane 180°		0.000000 m2	
Emitting area on Plane 0°	0.000000 m2			Emitting area on Plane 270°		0.000000 m2	
Emitting area on Plane 90°	0.000000 m2			Glare area at 76°		0.000000 m2	
Coordinate system	CG			Symmetry Type		Asymmetrical	
Date	11-12-2017			Maximum Gamma Angle		180	
Measurement Distance	0.00			Measurement Flux		3360.40 lm	
LED Flux=4364,72lm LED Power=56W Eff=77% EfcLed=78lm/W EfcLum=56lm/W L70(6K)=50000h							
C.I.E.	38 69 90 6 100			D DIN 5040	--		
F UTE	0.06 G + 0.94 T			B NBN	BZ 6 / 2.5 / BZ 5		

Width at 50.00 % of Max Intensity

H[m]	1.00	2.00	3.00	4.00	5.00	H[m]	1.00	2.00	3.00	4.00	5.00
OA	1.04	2.08	3.12	4.16	5.20	OC	1.04	2.08	3.12	4.16	5.19
OB	1.04	2.08	3.12	4.16	5.20	OD	1.04	2.08	3.12	4.16	5.20

	Luminous Intensities [cd/klm]									
	0	5	15	25	35	45	55	65	75	85
OA	1487.40	1480.40	1423.99	1319.38	1147.68	796.85	392.50	185.82	90.27	29.54
OB	1487.40	1481.39	1427.20	1323.32	1149.11	795.80	388.95	181.21	86.48	26.37
OC	1487.40	1480.94	1425.01	1322.21	1146.34	794.72	389.58	183.19	87.99	29.75
OD	1487.40	1482.15	1427.05	1323.79	1149.15	795.74	388.80	180.96	86.64	27.32



5.00	10.40	59	22	
4.00	8.32	93	35	
3.00	6.24	165	62	
2.00	4.16	372	138	
1.00	2.08	1487	554	
H[m]	D[m]	Max lux	Med lux	Alpha=46.1°+46.1° G=0.0

5.00	10.39	59	22	
4.00	8.31	93	35	
3.00	6.24	165	62	
2.00	4.16	372	138	
1.00	2.08	1487	554	
H[m]	D[m]	Max lux	Med lux	Beta=46.1°+46.1° G=0.0