

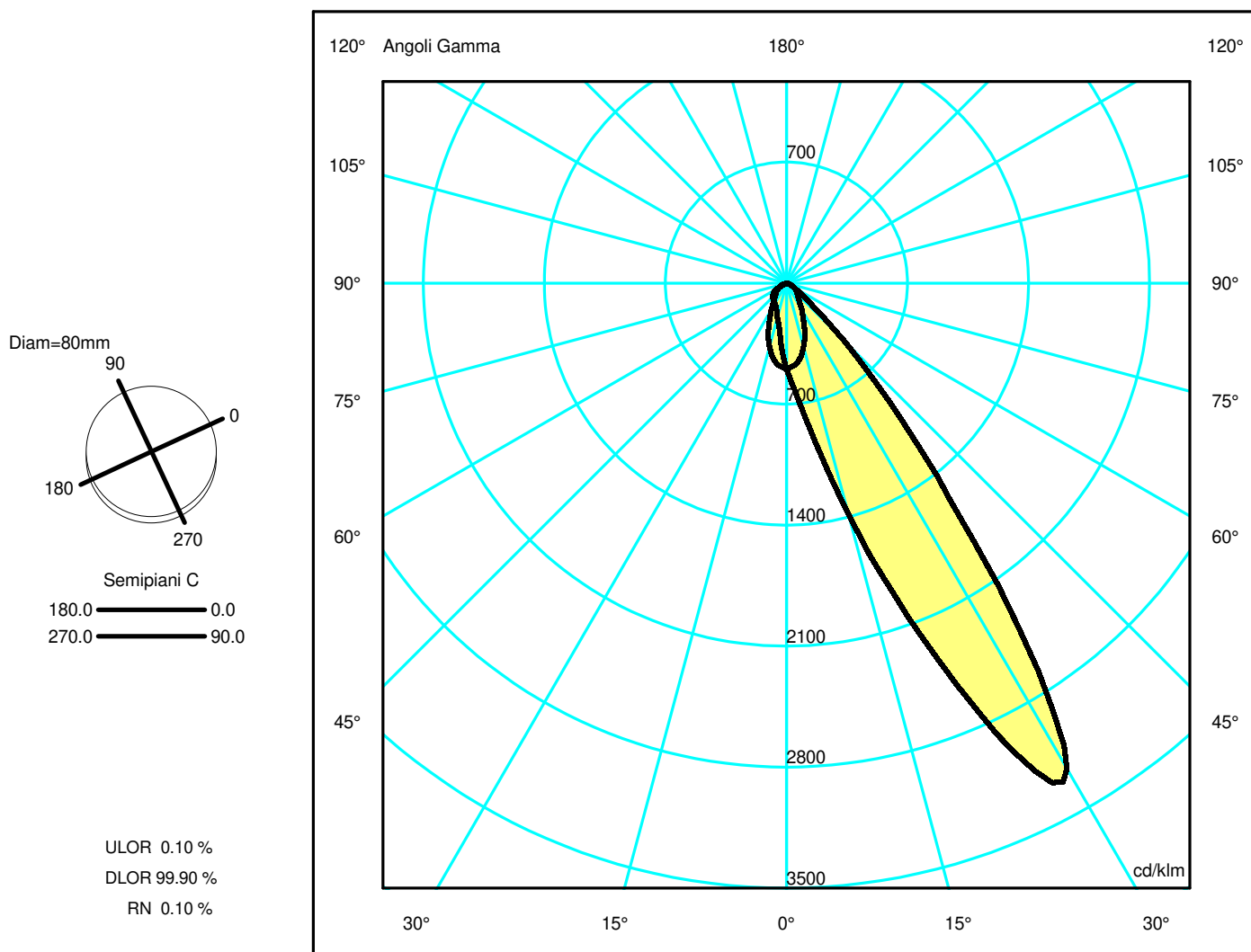
Luminaire

Code M326305_30°
Name EVERYT 80 RD OR TS LED2700K 2X9° B_30°

Measurement

Code FTS2400131.
Name EVERYT 80 RD OR TS LED2700K 2X9° B_30°

Luminaire Flux	998 lm	Luminaire Power	10.0 W	Efficacy	99.800 lm/W	Efficiency	100.00%
Source Flux	998 lm	Maximum value	3298.07 cd/klm	Position	C=0.00 G=29.00	CG	Sym. on planes 0-180
Round Luminaire		Diam.	80 mm	Height	115 mm		
Round Luminous Area		Diam.	60 mm	Height	0 mm		
Horizontal Luminous Area			0.002827 m ²	Emitting area on Plane 180°			0.000000 m ²
Emitting area on Plane 0°			0.000000 m ²	Emitting area on Plane 270°			0.000000 m ²
Emitting area on Plane 90°			0.000000 m ²	Glare area at 76°			0.000684 m ²
Coordinate system		CG		Symmetry Type		Sym. on planes 0-180	
Date		20-05-2024		Maximum Gamma Angle		180	
Measurement Distance		0.00		Measurement Flux		998 lm	
LED Flux=1474lm LED Power=10W Eff=68% EfcLed=147lm/W EfcLum=100lm/W CCT=2700K Ra=90 R9=50 SDCM=3 L70(9k)=50000h							
C.I.E.	79 95 99 100 100			D DIN 5040	A60		
F UTE	1.00 B			B NBN	BZ 2 / 0.6 / BZ 1 / 4 / BZ 2		



Luminaire

Code M326305_30°
Name EVERYT 80 RD OR TS LED2700K 2X9° B_30°

Measurerm.

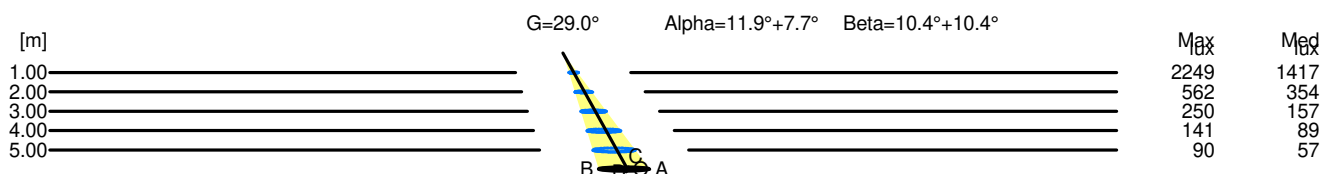
Code FTS2400131.
Name EVERYT 80 RD OR TS LED2700K 2X9° B_30°

Luminaire Flux	998 lm	Luminaire Power	10.0 W	Efficacy	99.800 lm/W	Efficiency	100.00%
Source Flux	998 lm	Maximum value	3298.07 cd/klm	Position	C=0.00 G=29.00	CG	Sym. on planes 0-180
Round Luminaire		Diam.	80 mm	Height	115 mm		
Round Luminous Area		Diam.	60 mm	Height	0 mm		
Horizontal Luminous Area		0.002827 m2		Emitting area on Plane 180°		0.000000 m2	
Emitting area on Plane 0°		0.000000 m2		Emitting area on Plane 270°		0.000000 m2	
Emitting area on Plane 90°		0.000000 m2		Glare area at 76°		0.000684 m2	
Coordinate system		CG		Symmetry Type		Sym. on planes 0-180	
Date		20-05-2024		Maximum Gamma Angle		180	
Measurement Distance		0.00		Measurement Flux		998 lm	
LED Flux=1474lm LED Power=10W Eff=68% EfcLed=147lm/W EfcLum=100lm/W CCT=2700K Ra=90 R9=50 SDCM=3 L70(9k)=50000h							
C.I.E.	79 95 99 100 100			D DIN 5040	A60		
F UTE	1.00 B			B NBN	BZ 2 / 0.6 / BZ 1 / 4 / BZ 2		

Width at 50.00 % of Max Intensity

H[m]	1.00	2.00	3.00	4.00	5.00	H[m]	1.00	2.00	3.00	4.00	5.00
OA	0.19	0.38	0.57	0.77	0.96	OC	0.21	0.42	0.63	0.84	1.05
OB	0.25	0.49	0.74	0.99	1.24	OD	0.21	0.42	0.63	0.84	1.05

	Luminous Intensities [cd/klm]									
	0	5	15	25	35	45	55	65	75	85
OA	495.36	643.96	1384.83	2876.95	2127.86	472.06	96.92	30.84	14.89	5.18
OB	495.36	354.82	203.15	146.51	127.39	110.46	88.96	0.00	0.00	0.00
OC	495.36	477.74	380.29	229.42	130.04	87.99	63.42	36.77	18.06	5.16
OD	495.36	477.74	380.29	229.42	130.04	87.99	63.42	36.77	18.06	5.16



H[m]	D[m]	Max lux	Med lux	Alpha=11.9°+7.7°	G=29.0
1.00	0.44	2249	1417		
2.00	0.88	562	354		
3.00	1.32	250	157		
4.00	1.76	141	89		
5.00	2.19	90	57		

H[m]	D[m]	Max lux	Med lux	Beta=10.4°+10.4°	G=0.0
1.00	0.42	2249	1417		
2.00	0.84	562	354		
3.00	1.26	250	157		
4.00	1.68	141	89		
5.00	2.10	90	57		