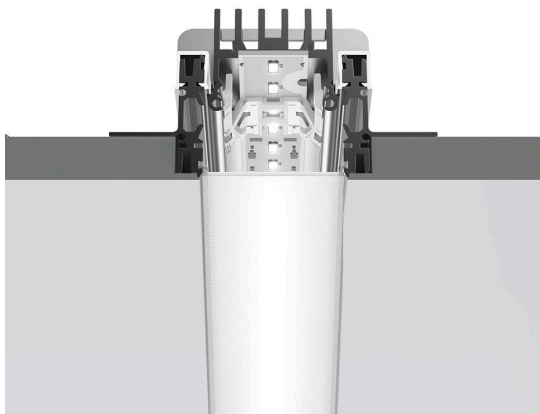


A.39 Recessed - Structural Module Trimless 2960mm 3000K DALI

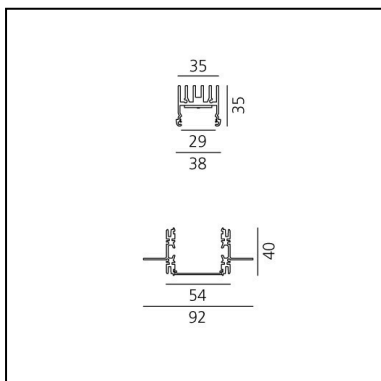
Carlotta de Bevilacqua

DESCRIPTION

Optimized version in line applications with wide lengths. Diffusing direct and direct + indirect emission. Recessed trim, trimless, suspension and ceiling versions. Dimmable and non dimmable in two CCT 3000K and 4000K versions.



IP20  Dimmable: 



CARACTÉRISTIQUES

- Code Produit : **AT01400**
- Couleur: **Aluminium**
- Installation: **Encastré**
- Séries: **Architectural Indoor**
- Environnement: **Indoor**
- Emission: **Direct**
- dessiné par: **Carlotta de Bevilacqua**

DIMENSIONS

- Longueur : **2960 mm**

SOURCES INCLUES

- Catégorie: **Led**
- Nombre: **1**
- Color Tolerance: **MacAdam 3SDCM**
- Service Life: **Life L70(17K) 102000h**

LUMINAIRE

- Watt: **81W**
- Flux Lumineux (lm): **5215lm**
- CCT: **3000K**
- Efficiency: **43%**
- Efficacy: **64.38lm/W**
- CRI: **90**
- Dimmable Typology: **Dali**

Remarques

Opal diffuser supplied separately.
APP interface supplied separately.
The APP driver can not be controlled dimming system and viceversa.

ACCESSOIRES



Remote BLL interface for Artemide App to manage dimmable ceiling modules (up to 40 addresses) DV1054APP

NO
IMAGE
AVAILABLE

A.39 - Opal Diffuser in Polycarbonate - L=10000mm
AT10000

NO
IMAGE
AVAILABLE

A.39 - Opal Diffuser in Polycarbonate -
L=1184mm AT10100

NO
IMAGE
AVAILABLE

A.39 - Opal Diffuser in Polycarbonate - L=2368mm
AT10200

NO
IMAGE
AVAILABLE

A.39 - Opal Diffuser in Polycarbonate -
L=25000mm AT10800

NO
IMAGE
AVAILABLE

A.39 - Opal Diffuser in Polycarbonate - L=50000mm
AT10900

NO
IMAGE
AVAILABLE

A.39 - Opal Diffuser in Polycarbonate -
L=2960mm AT10300